

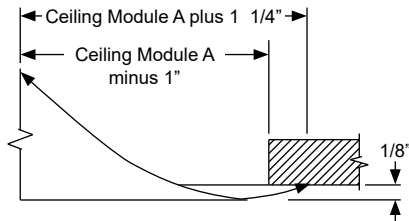
PRODUCT DIMENSIONS

S2300, A2300

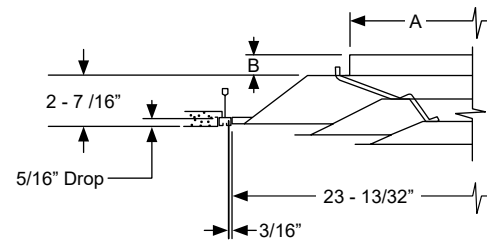
Fixed Pattern

Margin Details: SFM, LTF, SNI, SPL, NTG, RSC, RST

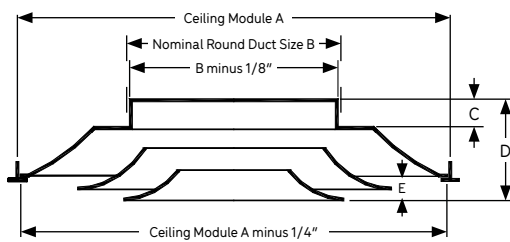
SFM



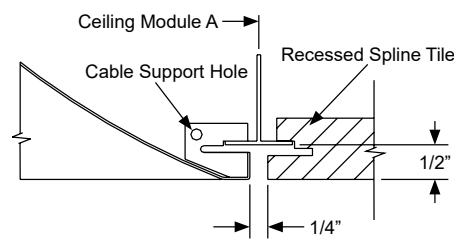
NTG



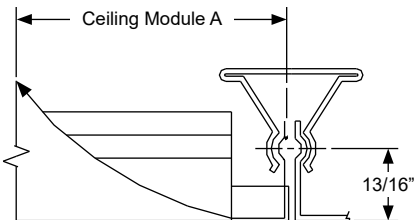
LTF



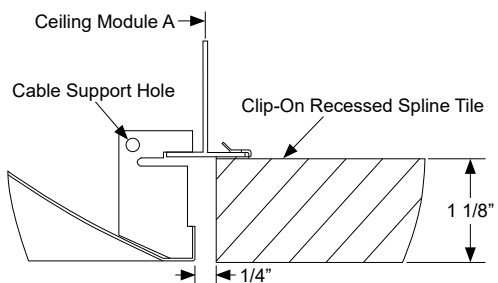
RSC



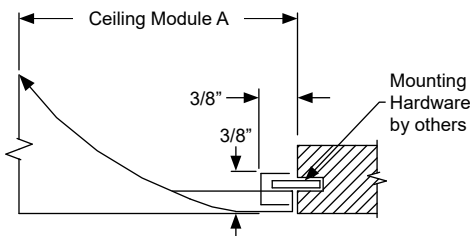
SNI



RST



SPL



Note: If Border RST is adjacent to a light fixture a gap will be visible above the backpan. A t-bar extender is available to fill this void, available from the ceiling manufacturer.

24x24 Module

Nom. Duct Size (in.)	S2300 Series Steel & Aluminum A	S2300 Series Steel B	A2300 Series Aluminum B
6	5-7/8	1	2
8	7-7/8	1	2
10	9-7/8	1-1/2	2
12	11-7/8	1-1/2	2
14	13-7/8	1-1/2	2
15	14-7/8	1-1/2	2

12x12 Module

Nom. Duct Size (in.)	S2300 Series Steel & Aluminum A	S2300 Series Steel B	A2300 Series Aluminum B
6	5-7/8	1-1/2	2
8	7-7/8	1-1/2	2

*Surface mount margin style includes an aluminum trim frame for installation.

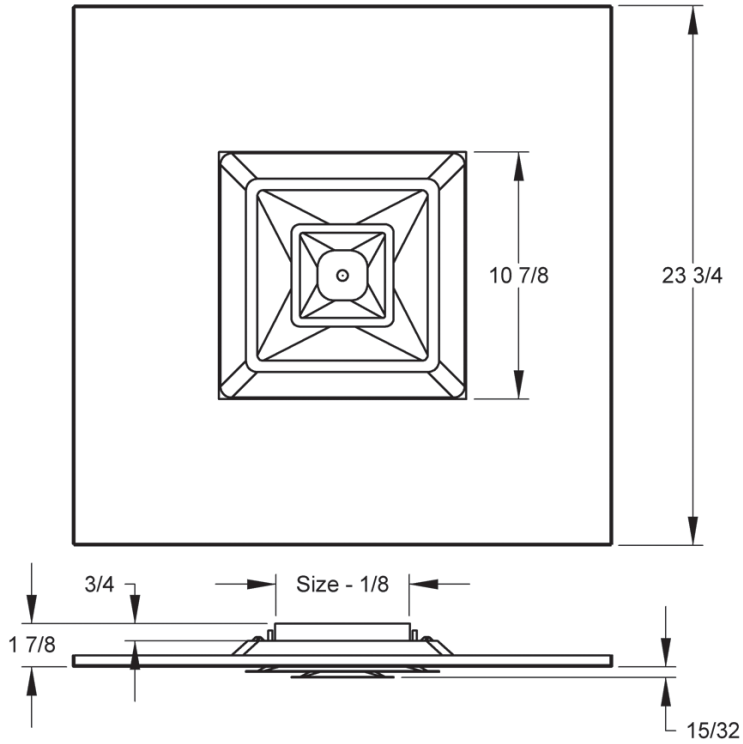


PRODUCT DIMENSIONS

S2300, A2300

Fixed Pattern
F12 Margin

Face View & Side View
12x12 Face in 24x24 Panel





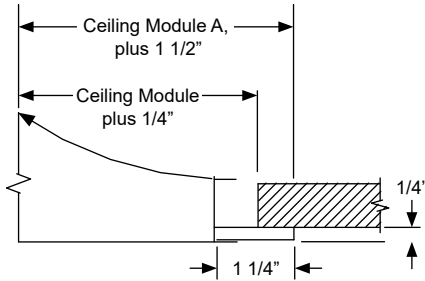
PRODUCT DIMENSIONS

S2300A, A2300A

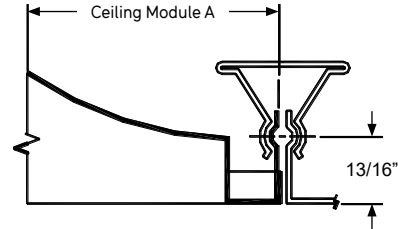
Fixed Pattern

Margin Details: SFM, LTF, L12, SNI, SPL, NTG

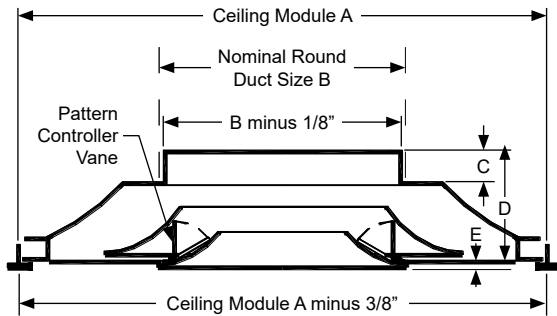
SFM



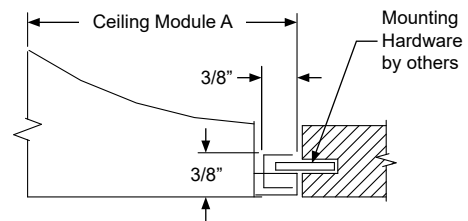
SNI



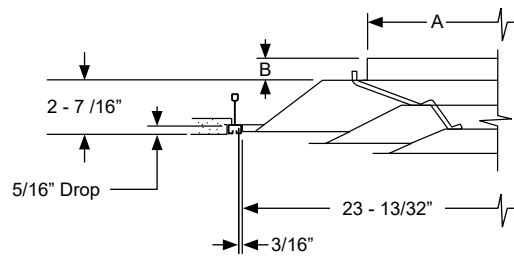
LTF



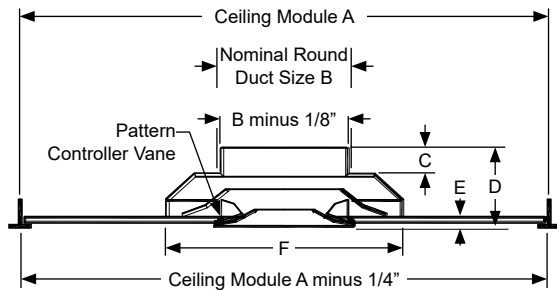
SPL



NTG



L12



24x24 Module

Nom. Duct Size (in.)	S2300 Series Steel & Aluminum A	S2300 Series Steel B	A2300 Series Aluminum B
6	5-7/8	1	2
8	7-7/8	1	2
10	9-7/8	1-1/2	2
12	11-7/8	1-1/2	2
14	13-7/8	1-1/2	2
15	14-7/8	1-1/2	2

12x12 Module

Nom. Duct Size (in.)	S2300 Series Steel & Aluminum A	2300 Series Steel B	A2300 Series Aluminum B
6	5-7/8	1-1/2	2
8	7-7/8	1-1/2	2

*Surface mount margin style includes an aluminum trim frame for installation.



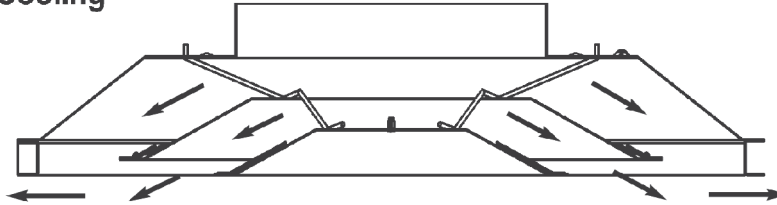
PRODUCT DIMENSIONS

S2300A, A2300A

Mode Adjustment

S2300A & A2300A Adjustable Pattern

Cooling



Heating

