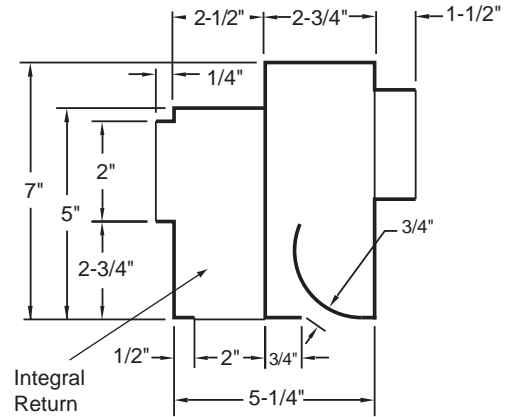
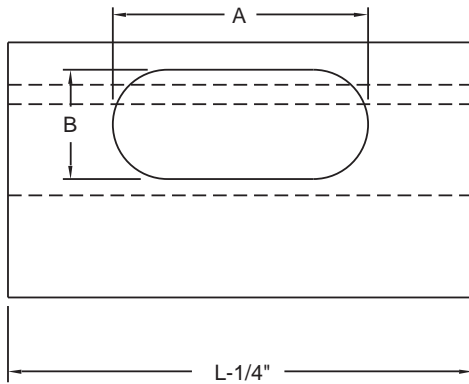


- Supply slots with contoured blades (non adjustable) create high inductions
- Integral return is mounted on side of diffuser
- Single slot configuration with 3/4" slot width (return slot has 2" width)
- Available lengths: 24", 36", 48", 60"
- Standard finish is black exposed surfaces and pattern blades
- Steel construction

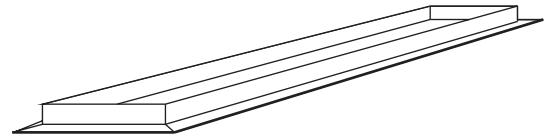
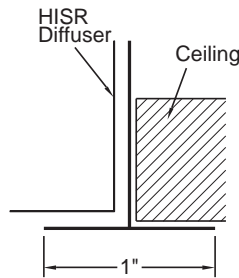


Available Inlet Sizes	A	B
6"	7-9/16"	3"
8"	10-1/16"	4"
10"	13-1/4"	4"

**Available lengths (L):**  
24", 36", 48", 60"

24" length available in 6" and 8" inlets only.

The HISR is designed for standard Lay-in T-bar ceiling systems. The optional PF plaster frame can be used to mount the diffuser in sheet rock or plaster ceilings (PF is mounted by others). Height is 1-1/2".



**Optional Plaster Frame (PF)**

Dimensions are in inches. Product information subject to change without notice.

PROJECT: \_\_\_\_\_  
 ARCHITECT: \_\_\_\_\_  
 ENGINEER: \_\_\_\_\_  
 CONTRACTOR: \_\_\_\_\_  
 LOCATION: \_\_\_\_\_

SUBMITTED BY: \_\_\_\_\_

DATE: 5-28-02 | SD-1858

**HISR**  
 Supply / Return  
 Plenum Slot Diffuser