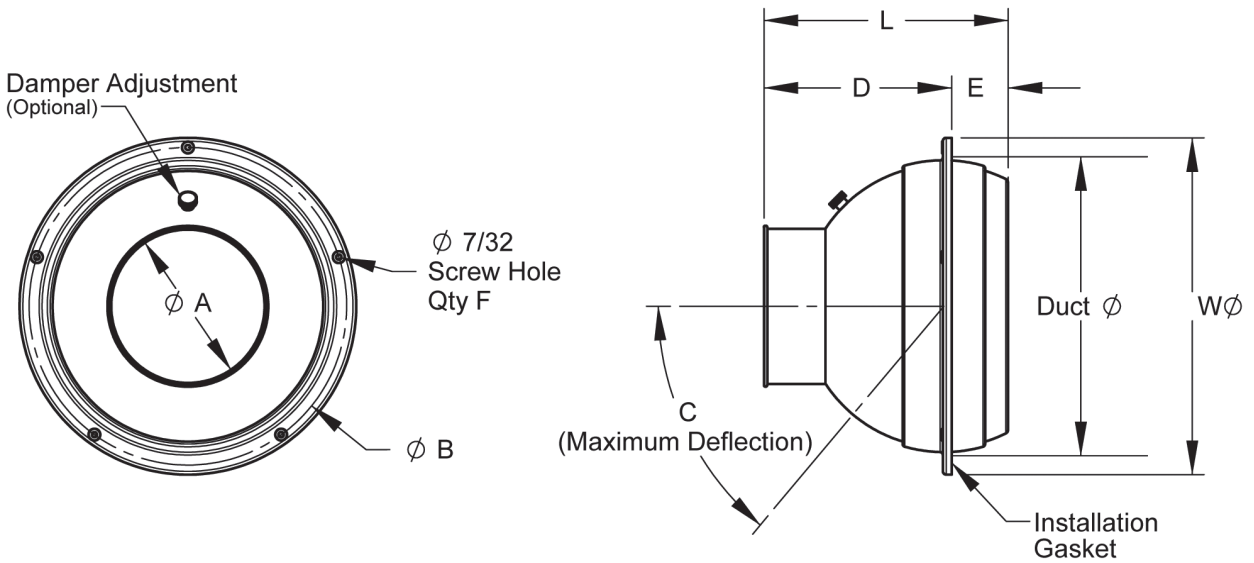




PRODUCT DIMENSIONS

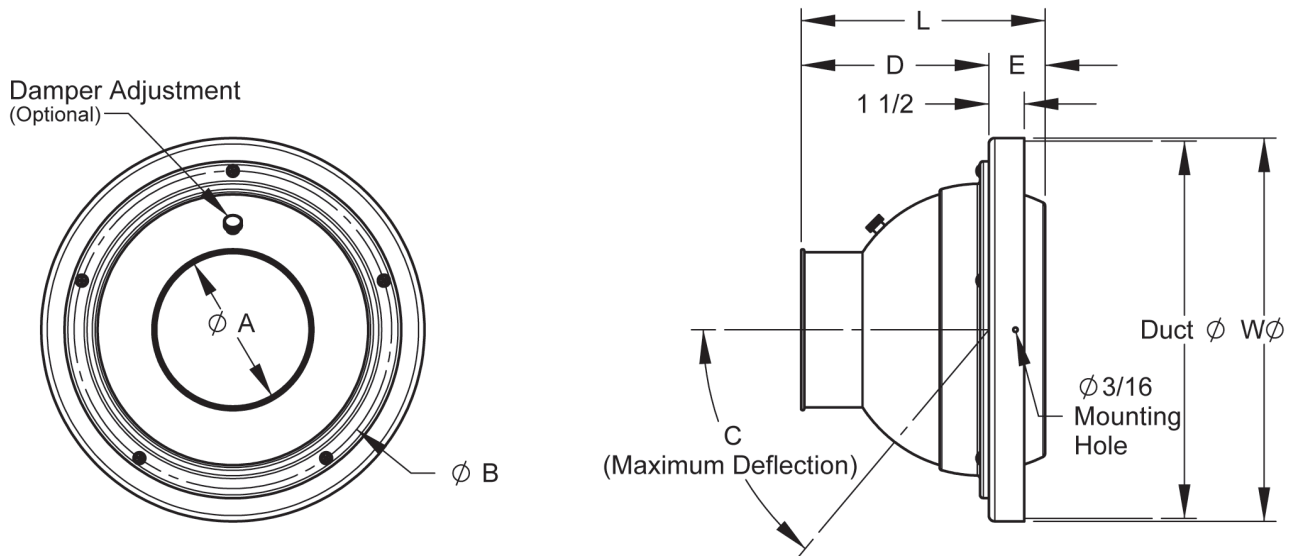
DJ Surface Mount (SF)



Size	Duct \emptyset	W \emptyset	L	A	B	C	D	E	F
3	3 3/8	4 9/16	2 3/4	1 1/2	3 13/16	32°	2 1/8	11/16	3
4	4 3/8	5 1/2	3 1/2	2	4 13/16	40°	2 9/16	15/16	4
5	5 1/2	6 11/16	4 9/16	2 9/16	6	42°	3 1/4	1 5/16	5
6	6 5/16	7 1/2	5 3/16	2 15/16	6 13/16	42°	3 11/16	1 1/2	5
7	7 1/2	9 1/8	5 7/8	3 9/16	8 3/8	42°	4 3/8	1 1/2	5
8	8 3/16	9 7/8	6 7/16	3 15/16	9 1/8	42°	4 3/4	1 3/4	5
10	11	12 3/4	8 13/16	5 1/2	12	40°	6 7/8	2	5
12	12 1/2	14 5/16	10 3/8	6 1/2	13 1/2	38°	7 7/8	2 1/2	5
16	16 3/4	18 1/2	13 3/8	9 1/16	17 3/4	40°	9 3/4	3 5/8	8
18	19 1/8	21 1/16	15 3/8	10 1/4	20 1/8	38°	11 5/8	3 3/4	8
20	19 1/8	21 1/16	15 3/8	12 1/4	20 1/8	34°	11 5/8	3 3/4	8

PRODUCT DIMENSIONS

DJ Duct Mount (DM)



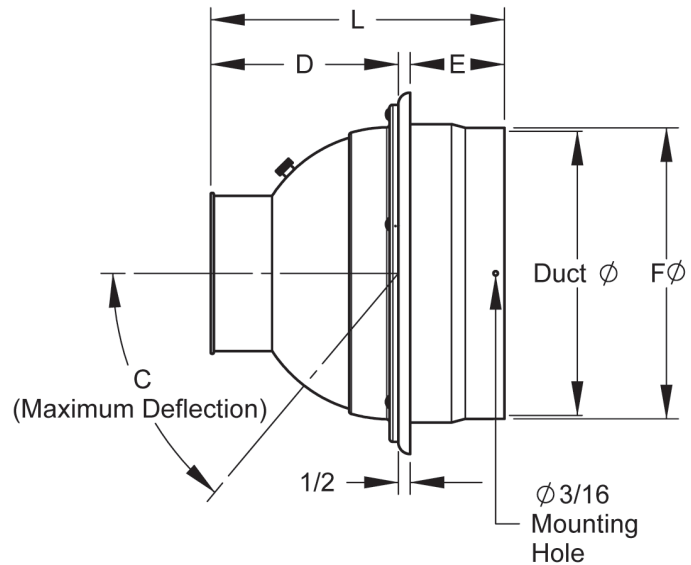
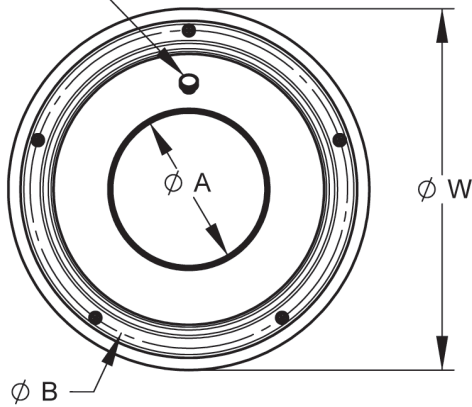
Size	Duct Ø	W Ø	L	A	B	C	D	E
6	8	8 1/4	5 3/16	2 15/16	6 13/16	42°	3 11/16	1 1/2
7	10	10 1/4	5 7/8	3 9/16	8 3/8	42°	4 3/8	1 1/2
8	11	11 1/4	6 7/16	3 15/16	9 1/8	42°	4 3/4	1 3/4
10	14	14 1/4	8 13/16	5 1/2	12	40°	6 7/8	2
12	16	16 1/4	10 3/8	6 1/2	13 1/2	38°	7 7/8	2 1/2
16	20	20 1/4	13 3/8	9 1/16	17 3/4	40°	9 3/4	3 5/8
18	24	24 1/4	15 3/8	10 1/4	20 1/8	38°	11 5/8	3 3/4
20	24	24 1/4	15 3/8	12 1/4	20 1/8	34°	11 5/8	3 3/4



PRODUCT DIMENSIONS

DJ Combination Mount (CM)

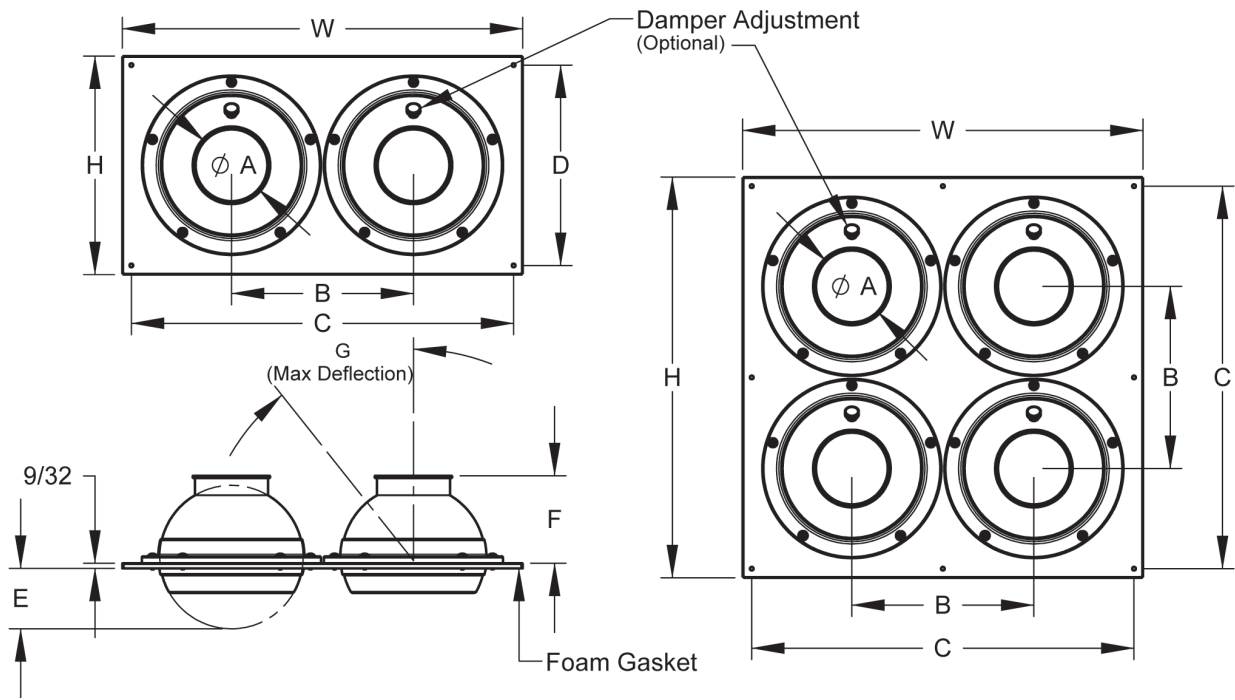
Damper Adjustment
(Optional)



Size	Duct ϕ	W ϕ	L	A	B	C	D	E	F
6	6	8 3/8	5 11/16	2 15/16	6 13/16	42°	3 11/16	1 1/2	6 1/4
7	7	10 1/8	6 7/8	3 9/16	8 3/8	42°	4 3/8	2	7 1/4
8	8	11 7/8	7 2/8	3 15/16	9 1/8	42°	4 3/4	2	8 1/4
10	10	13 3/4	10 7/8	5 1/2	12	40°	6 7/8	3 1/2	10 1/4
12	12	15 5/16	12 3/8	6 1/2	13 1/2	38°	7 7/8	4	12 1/4
16	16	19 1/2	15 1/4	9 1/16	17 3/4	40°	9 3/4	5	16 1/4
18	20	22 1/16	17 1/8	10 1/4	20 1/8	38°	11 5/8	5	20 1/4
20	20	22 1/16	17 1/8	12 1/4	20 1/8	34°	11 5/8	5	20 1/4

PRODUCT DIMENSIONS

DJ Two (2E) & Four (4E) Element



Size	Frame	Duct	W	H	A	B	C	D	E	F	G
3	2E	10x4	12	6	1 1/2	6	11	5	1 7/8	2 1/4	33°
4	2E	12x6	14	8	2	7	13	7	1 7/16	2 15/16	41°
5	2E	14x6	16	8	2 9/16	8	15	7	2	3 1/2	44°
6	2E	16x8	18	10	2 15/16	9	17	9	2 7/16	4	43°
7	2E	18x9	20	11	3 9/16	9 1/3	19	10	2 1/16	3 5/8	43°
8	2E	20x10	22	12	3 15/16	10	21	11	2 1/16	3 5/8	33°
3	4E	10x10	12	12	1 1/2	5	11	-	1 7/8	2 1/4	33°
4	4E	12x12	14	14	2	6	13	-	1 7/16	2 15/16	41°
5	4E	14x14	16	16	2 9/16	7	15	-	2	3 1/2	44°
6	4E	16x16	18	18	2 15/16	8	17	-	2 7/16	4	43°
7	4E	18x18	20	20	3 9/16	9 11/32	19	-	2 1/16	3 5/8	43°
8	4E	20x20	22	22	3 15/16	10	21	-	2 1/16	3 5/8	33°